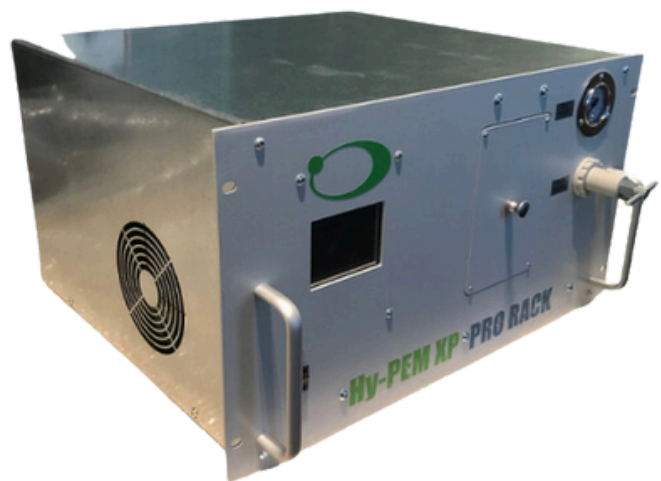
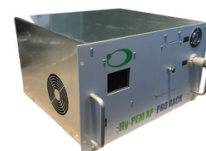
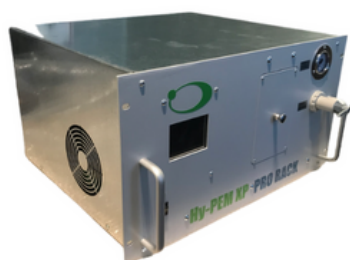
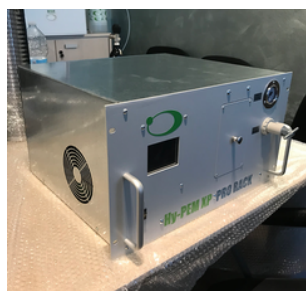




HY-PEM XP PRO RACK



HY-PEM XP PRO RACK



MAIN FEATURES



Hydrogen release pressure is adjustable up to 16 bar according to the ideal parameters for recharging metal hydride hydrogen cartridges of all types. The ultrapure hydrogen gas maximizes the efficiency and life of metal hydride cartridges.



Energy Storage - Fuel Cell Power Supply

H2 Combustors



To produce hydrogen everywhere by capturing energy from renewable sources!

| TECHNICAL PARAMETERS | Hy-PEM XP Pro Rack 150 | Hy-PEM XP Pro Rack 250 | Hy-PEM XP Pro Rack 400 |
|----------------------|--|--|--|
| AC power supply | 230V AC o 115V AC | 230V AC o 115V AC | 230V AC o 115V AC |
| DC power supply | On Request | On Request | On Request |
| Productive Capacity | 150 cc/min | 250 cc/min | 400 cc/min |
| Adjustable Pressure | 10 – 15 bar | 10 – 15 bar | 10 – 15 bar |
| Gas Purity | 6.0 (99.9999%) | 6.0 (99.9999%) | 6.0 (99.9999%) |
| Power | 170 W AC | 200 W AC | 250 W AC |
| Dimension | 48,3 x 26,67 x 39,7 cm | 48,3 x 26,67 x 39,7 cm | 48,3 x 26,67 x 39,7 cm |
| Weight | 22 Kgs | 22 Kgs | 25 Kgs |
| Compatibility | Energy Storage Fuel-Cell Alimentation H2 Combustors Camping and Caravaning Fuel-Cell Continuity Groups | Energy Storage Fuel-Cell Alimentation H2 Combustors Camping and Caravaning Fuel-Cell Continuity Groups | Energy Storage Fuel-Cell Alimentation H2 Combustors Camping and Caravaning Fuel-Cell Continuity Groups |

HY-PEM XP PRO RACK



| TECHNICAL PARAMETERS | Hy-PEM XP Pro Rack 600 | Hy-PEM XP Pro Rack 800 | Hy-PEM XP Pro Rack 1000 |
|----------------------|-----------------------------|-----------------------------|-----------------------------|
| AC power supply | 230V AC o 115V AC | 230V AC o 115V AC | 230V AC o 115V AC |
| DC power supply | On Request | On Request | On Request |
| Productive Capacity | 600 cc/min | 800 cc/min | 1000 cc/min |
| Adjustable Pressure | 10 – 15 bar | 10 – 15 bar | 10 – 15 bar |
| Gas Purity | 6.0 (99.9999%) | 6.0 (99.9999%) | 6.0 (99.9999%) |
| Power | 325 W AC | 375 W AC | 400 W AC |
| Dimension | 48,3 x 26,67 x 39,7 cm | 48,3 x 26,67 x 39,7 cm | 48,3 x 26,67 x 39,7 cm |
| Weight | 27 Kgs | 27 Kgs | 30 Kgs |
| Compatibility | Energy Storage | Energy Storage | Energy Storage |
| | Fuel-Cell Alimnentation | Fuel-Cell Alimnentation | Fuel-Cell Alimnentation |
| | H2 Combustors | H2 Combustors | H2 Combustors |
| | Camping and Caravaning | Camping and Caravaning | Camping and Caravaning |
| | Fuel-Cell Continuity Groups | Fuel-Cell Continuity Groups | Fuel-Cell Continuity Groups |

| TECHNICAL PARAMETERS | Hy-PEM XP Pro Rack 1200 |
|----------------------|-----------------------------|
| AC power supply | 230V AC o 115V AC |
| DC power supply | On Request |
| Productive Capacity | 1200 cc/min |
| Adjustable Pressure | 10 – 15 bar |
| Gas Purity | 6.0 (99.9999%) |
| Power | 460 W AC |
| Dimension | 48,3 x 26,67 x 39,7 cm |
| Weight | 30 Kgs |
| Compatibility | Energy Storage |
| | Fuel-Cell Alimnentation |
| | H2 Combustors |
| | Camping and Caravaning |
| | Fuel-Cell Continuity Groups |